

light on your work

**X-HYBRID**  
MOBILE  
6X150W - LED - 9M



**TRIME**  
Lighting Tower Specialist



## **X-HYBRID** MOBILE 6x150W - LED - 9M

Our engineers know that the market needs a lighting tower that is rugged, long lasting and safe. The X-HYBRID MOBILE has been created beginning from these characteristics. It is the best solution to your needs and guarantees 3800 sqm of illuminated area. 7 units can be loaded on a standard truck. To all of this, we added the technology that allows for maximum fuel efficiency and reliability.



8,5m



1290 Kg



340°



3800sqm



222(l) - 0,55(l/h)



battery

- Multi-directionally adjustable and tiltable floodlights
- 7 sections hydraulic vertical tower 8,5m, 340° rotatable
- Standard light sensor for machine power on and off
- Galvanized metalworks
- 80 µm powder coating
- Very compact dimensions for easy handling & transportability, up to 7 units per truck
- Central lifting eye longitudinal and transversal forklift pockets for effective handling
- Plug & play, colour coded cables and connectors
- Guided main coiled cable to avoid damage during tower operation
- Control panel alarms for engine protection and fuel level indicator
- Circuit breaker for electrical protection against overload
- External emergency stop button
- Fully bunded tank, 110%
- Certified wind stability up to 110 km/h
- 4 extendable & height adjustable stabilizers
- On board levels for guidance during stabilization

## APPLICATIONS



Gas, oil & mining operations



Special events



Rural & hard to reach areas



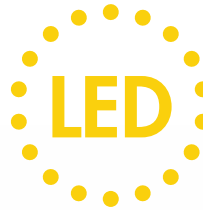
Emergency response



Construction & work sites



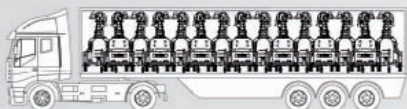
Military applications



Illuminated area  
**3800sqm**



**Ease of transport  
and handling**



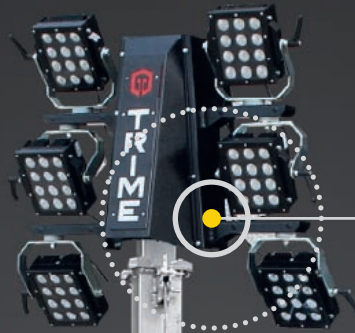
**7  
Units Per Truck**



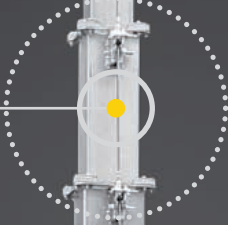
**You can place 7 units on a single vehicle thanks to one of the compactest footprints on the market.**

## KEY BENEFITS

- ✓ *Low transport cost*
- ✓ *Low fuel consumption*
- ✓ *LED lamps mean NO replacement of*
  - ✓ *bulbs*
  - ✓ *lamp glass*
  - ✓ *ballast*
  - ✓ *capacitors**Reducing Call Out Costs*



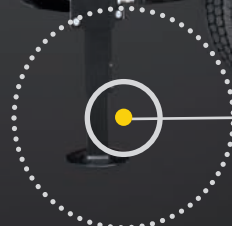
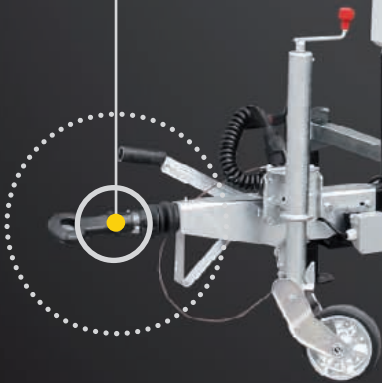
LIGHT SENSOR  
FEATURED AS STANDARD



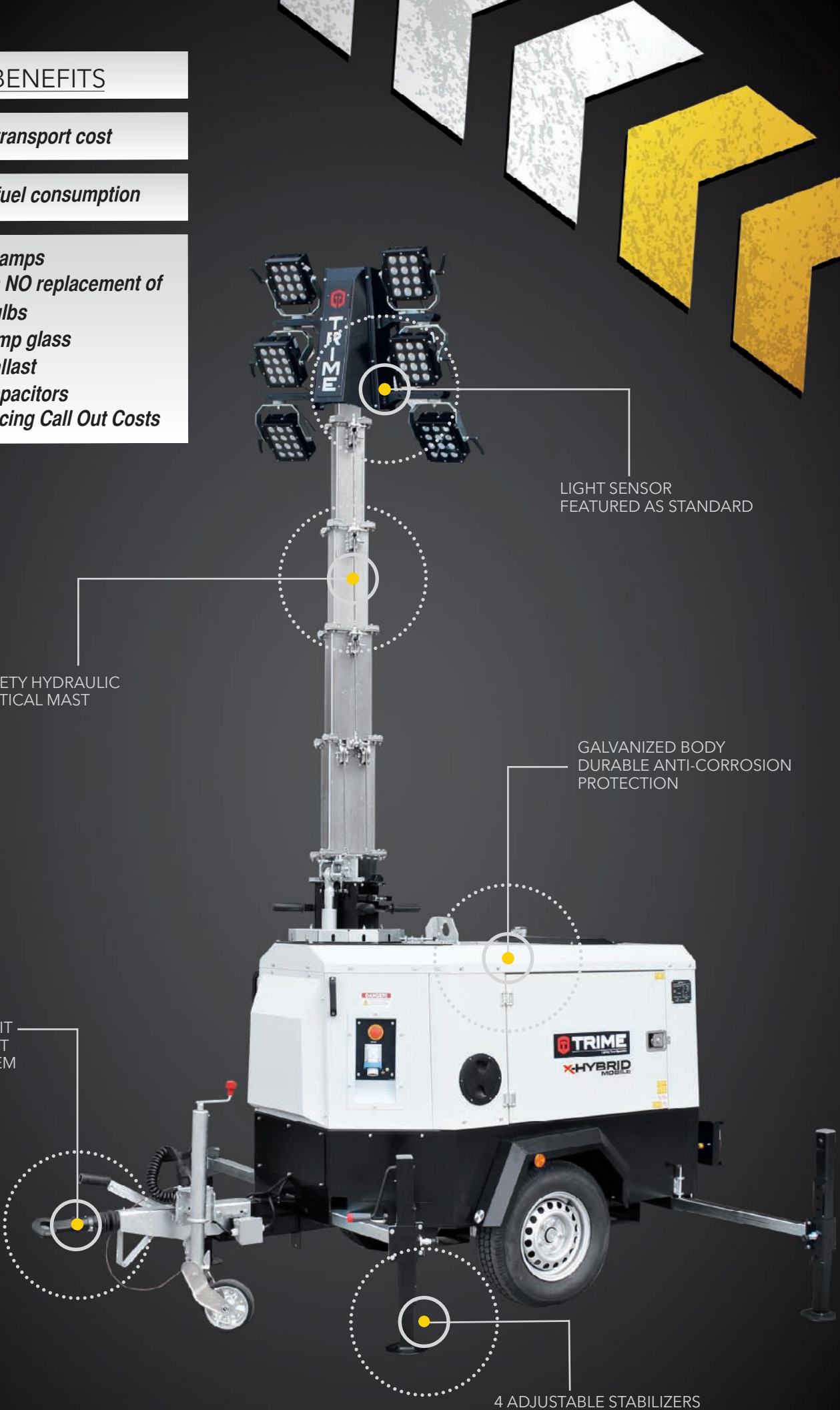
SAFETY HYDRAULIC  
VERTICAL MAST

GALVANIZED BODY  
DURABLE ANTI-CORROSION  
PROTECTION

SAFETY AMOSS KIT  
AUTOMATIC MAST  
LOWERING SYSTEM



4 ADJUSTABLE STABILIZERS





technical data

**Dimensions & weight**

Dimensions min. (mm)	2944 x 1466 x 2570 mm
Dimensions max (mm)	2944 x 2928 x 8500 mm
Dry Weight	1290Kg

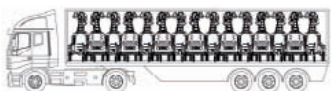
**Features**

Rotation	340°
Floodlights	6x150W LED
IP Level	67
Options	Timer

**Alternator**

Model	Linz Alumen SB
Rated output Kva	3.5
Frequency Hz	50
Voltage V	230
Insulation class	H
Degree of Protection	IP23

**Standard load delivery**

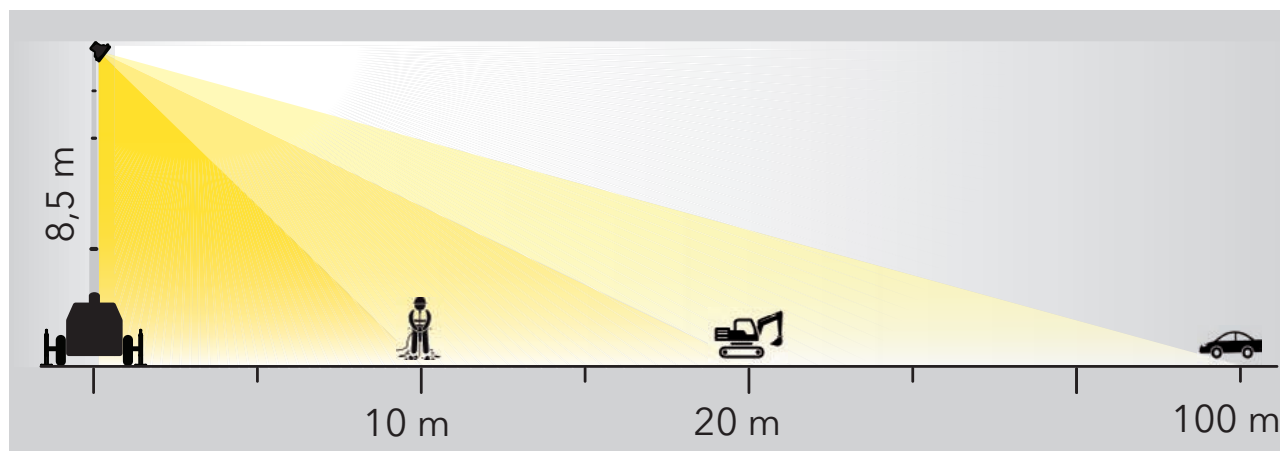


**7 sets**

Units Per Truck

**Illuminated area (5 lux min.)**

**3800 sqm**



**Engine**

Model	Kubota Z482
Fuel	Diesel
rpm	1500
Tank capacity (l)	222
Fuel consumption (l/h)	0,55
Running time (h)	863
Noise level at 7mt	62

**Battery**

Type	AGM ZL 06 130
Batteries number	4
Batteries pack	24V DC 400 Ah
Expected battery cycle	500
Expected battery life time (h)	9500

**Hybrid mode**

Running time (h)	11
Charging time with LED's ON (h)	11
Charging time with LED's OFF (h)	8
Complete discharge / charge cycle (h)	19
Hybrid mode consumption (l/h)	0,23



Lighting Tower **Specialist**

**TRIME s.p.a.**

Strada per Robecco, snc  
 20081 Cassinetta di Lugagnano (MI) - Italy  
 Tel. +39 02 942 1724  
 www.trime.it - info@trime.it